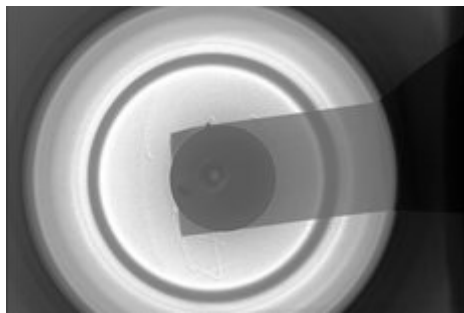


X-ray

Inspection of lithium-ion battery parts crucial to safety

The danger exists that lithium-ion batteries can catch fire due to overcharging or a defective insulation layer. For this reason, they have to meet strict safety specifications which can be inspected via X-raying.



- Inspection of insulation layer and fuse
- Control of welds inside the battery
- Assembly control

X-ray image of a battery

There are manifold causes for quality fluctuations in batteries. In the case of lithium-ion batteries, flaws in the insulation layer or a defective fuse can lead to overcharging and thus to the battery's destruction, including potential subsequent damage. During assembly control the components are inspected in terms of completeness and position. The welds are inspected as well.

YXLON offers X-ray systems with a CT option and computed tomography systems for the inspection of lithium-ion batteries.

Yxlon offers you a wide range of X-ray techniques. Yxlon designs solutions that replace X-ray films, provide radioscopy and fully automatic defect recognition in X-ray images, as well as computed tomography services for scanning inspection items ranging from micro-CT to CT using a linear accelerator.