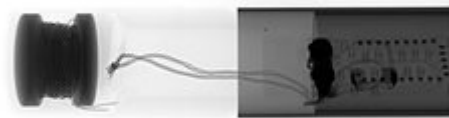


X-ray

Detecting assembly problems in sensors, including defect analysis

Sensors are comprised of electromechanical components and materials with different densities. Defect analysis for these components poses a challenge. YXLON responds by offering fitting solutions.



- Defect analysis
- Assembly and completeness control
- Comparison of actual vs. target situation

X-ray image of a sensor

Sensors provide for greater driving safety in a car by monitoring powertrain function, for example. They monitor the status of an aircraft door, the position of a landing flap or the tail unit. An extremely large number of diverse possibilities exists for applying these sensors, and for nearly every application there is a specific solution, too.

The materials used in sensors are just as diverse as the applications. Plastics and metals are used in which electronic circuits have been embedded. In the course of defect analysis it is necessary to clearly delineate between these different materials and detect any anomalies or flaws.

YXLON X-ray systems are suited for every inspection task. Y.Cheetah and Y. Cougar are best used for the inspection of small items.

Yxlon offers you a wide range of X-ray techniques. Yxlon designs solutions that replace X-ray films, provide radioscopy and fully automatic defect recognition in X-ray images, as well as computed tomography services for scanning inspection items ranging from micro-CT to CT using a linear accelerator.

Distributed by