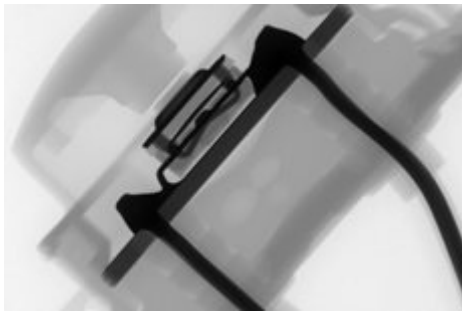


## X-ray

# Inspection of manufacturing and assembly for plugs and switches

Plugs and switches are made of plastic and metal. Their interior and exterior geometry must be inspected in the course of manufacturing, their inner construction during assembly control.



- Geometric measurement
- Assembly control
- Completeness inspection

Inspection of manufacturing and assembly for plugs and switches

There are several inspection tasks within the overall manufacturing process for plugs and switches. During the initial prototyping and ongoing production process phases, the interior and exterior geometry of the housing to be produced must be compared with the target data; any variances must be ascertained. This information can be acquired quickly and easily with the help of computed tomography. Corrections within the production process can then be carried out efficiently and in a targeted manner.

Manifold demands are placed on the inspection process when controlling completeness and assemblies. Here, a check is made whether all parts were built in correctly and without flaws, and whether excess materials such as fragments or solder are present inside the plug or switch.

For the inspection of fiber-reinforced materials YXLON offers X-ray systems and computed tomography systems.

Yxlon offers you a wide range of X-ray techniques. Yxlon designs solutions that replace X-ray films, provide radioscopy and fully automatic defect recognition in X-ray images, as well as computed tomography services for scanning inspection items ranging from micro-CT to CT using a linear accelerator.

Distributed by