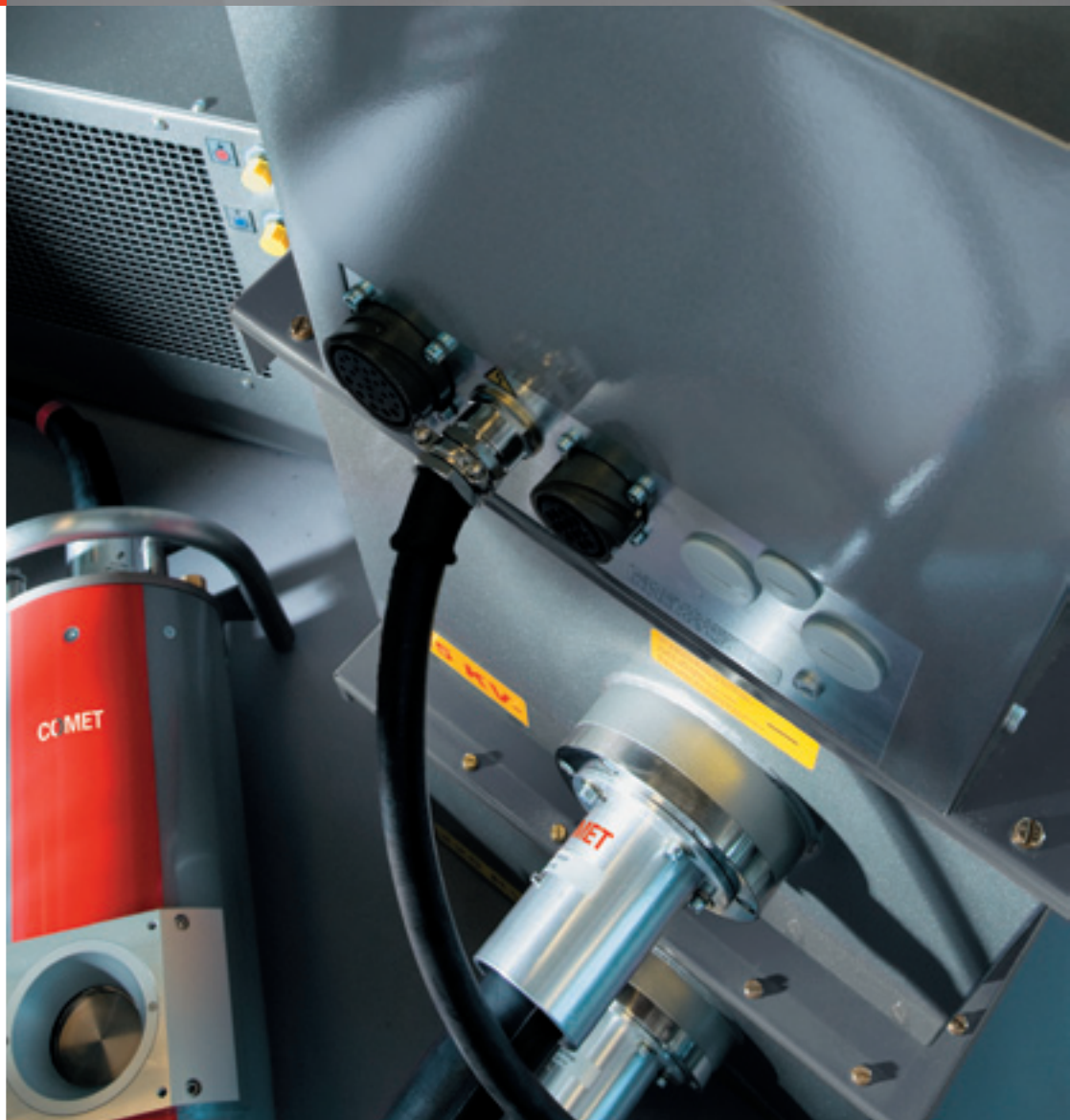
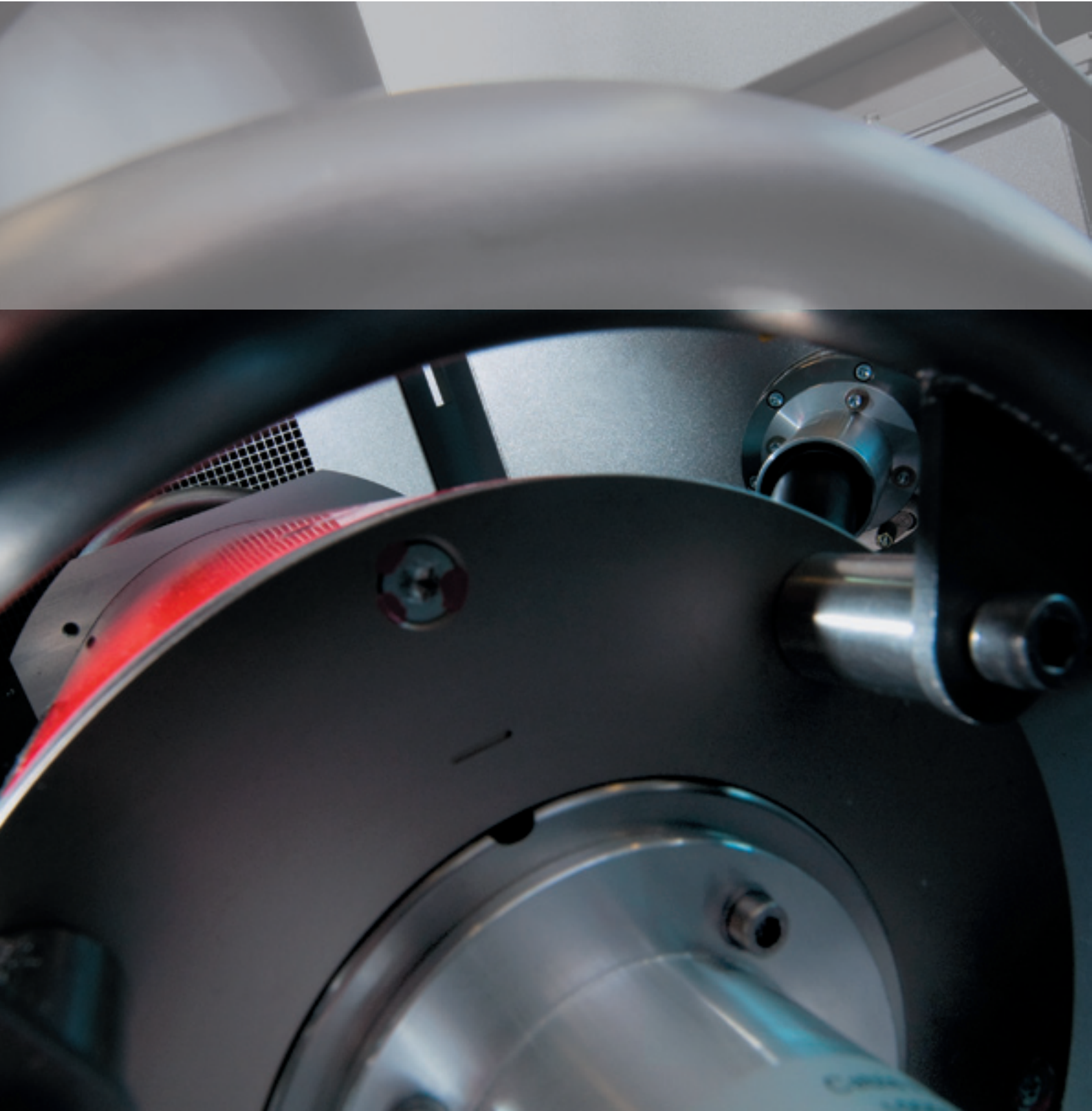


Bipolar Metal Ceramic Tubes

Industrial X-Ray

Overview







About Bipolar Metal Ceramic X-Ray Tubes

The COMET Bipolar Metal Ceramic tubes are designed for use in demanding industrial applications like Security and Non-Destructive Testing.

The tube assembly consists of a Bipolar X-Ray tube and tube housing with two integrated high voltage receptacle sockets. The X-Ray proof housing has an integrated cooling system and is equipped with oil hose connections.

The main advantages are high power, small dimensions, low weight and rugged mechanical design.

“One Stop Shop” for Industrial X-Ray Sources:

COMET’s XRS Modules

COMET is pleased to offer all of the necessary components for a customized X-Ray Source: The new XRS modules each contain a COMET X-Ray tube, high voltage generator with cables and coolers designed for easy integration that will optimize system performance. All XRS modules are factory prepared and tested for hassle free installation and operation.

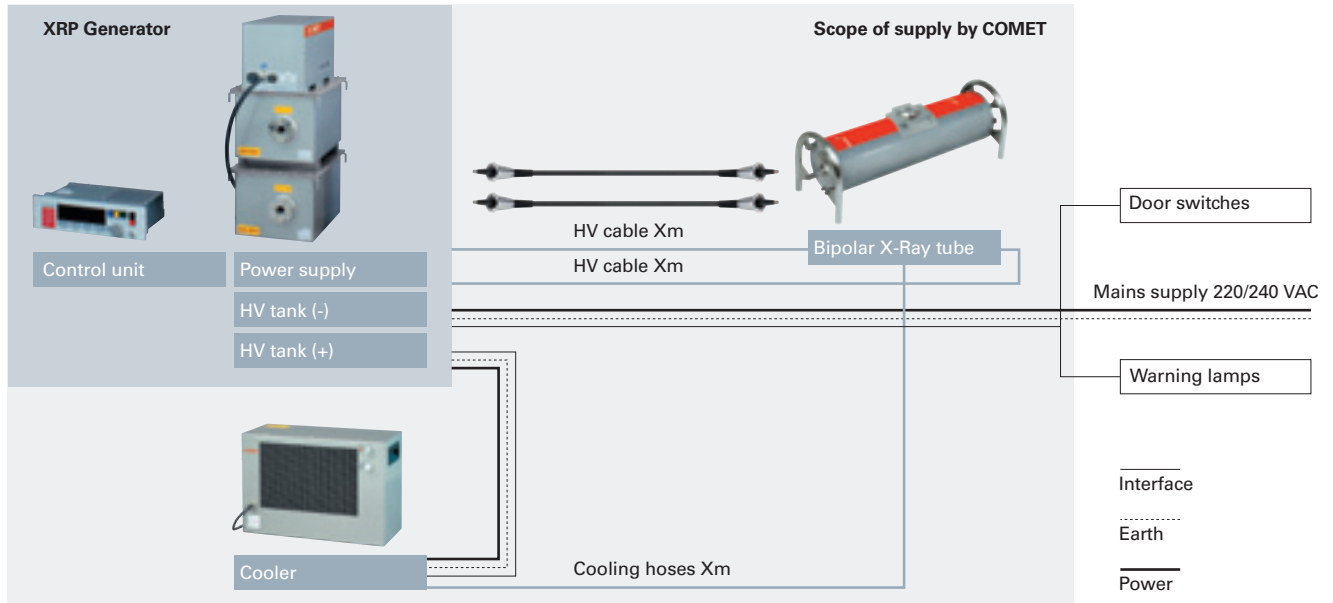
This novel solution demonstrates COMET’s continuous commitment and investment in delivering real added value to our worldwide customer base.

About the Business Unit Industrial X-Ray

COMET Industrial X-Ray is an experienced supplier of components and modules for industrial X-Ray applications and is proud of its reputation as the preferred engineering partner in terms of innovation potential, know how, flexibility and speed. Our product range features X-Ray tubes and sources with small focal spot resolution ($< 1 \mu\text{m}$) up to 6 kW in output for more power demanding requirements: from the smallest footprint for use in portable units to 800 kV fixed gantry systems that are suitable for cargo screening.

Bipolar X-Ray Source

Diagram of a Bipolar X-Ray Source XRS and its environment.



Ordering No.	Focal spots (EN 12543)	Terminal type	Ordering No. flange	CABLE		COOLER	
				Type	Ordering No.	Type	Ordering No.
915334.51	d=1.9mm/d=3.6mm	R24	100001711	N3/160-R24SL-R24SL-Xm	XRC-4501-OW	10008643	
915358.51	d=3.0mm/d=5.5mm	R24	100001711	N3/160-R24SL-R24SL-Xm	XRC-4501-OA	10008642	
915368.51	d=0.4mm/d=1.0mm	R24	100001711	N3/160-R24SL-R24SL-Xm	XRC-4501-OW	10008643	
915334.58	d=1.9mm/d=3.6mm	R24	100001711	N3/160-R24SL-R24SL-Xm	XRC-4501-OA	10008642	
915366.55	d=2.5mm/d=5.5mm	R28	100001710	P3/250-R28SL-R28SL-Xm	XRC-4501-OA	10008642	
915366.51	d=2.5mm/d=5.5mm	R28	100001710	P3/250-R28SL-R28SL-Xm	XRC-4501-OW	10008643	
915344.59	d=2.5mm/d=5.5mm	R28	100001710	P3/250-R28SL-R28SL-Xm	XRC-4501-OW	10008643	
915369.51	d=0.4mm/d=1.0mm	R28	100001710	P3/250-R28SL-R28SL-Xm	XRC-4501-OA	10008642	



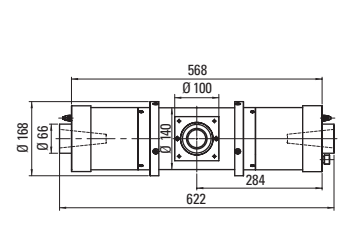
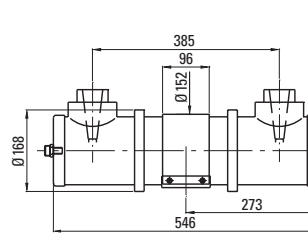
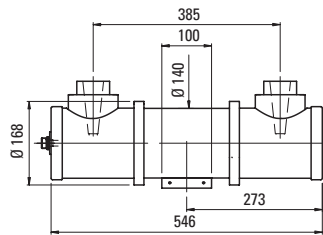
Ordering No.	915334.51
Ordering No. with 90° housing	915334.56
Nominal tube voltage	320 kV
Continuous rating	640 W / 1600 W
Focal spot acc. EN 12543	d = 1.9 mm / d = 3.6 mm
Filament current, max.	4.9 A / 4.6 A
Filament voltage, typical	3.0 V / 6.8 V
Inherent filtration	3 mm Be
Target material	W
Target angle	20°
Radiation coverage	40°
Leakage radiation, max.	5 mSv/h
Cooling medium	Oil
Cooling medium flow, min.	14 l/min
Temperature at inlet, max.	50° C
Weight	40 kg
Terminal type	R24
Mounting flange	10001711
Locking device	940303

MXR-320/23	
Ordering No.	915334.51
Ordering No. with 90° housing	915334.56
Nominal tube voltage	320 kV
Continuous rating	640 W / 1600 W
Focal spot acc. EN 12543	d = 1.9 mm / d = 3.6 mm
Filament current, max.	4.9 A / 4.6 A
Filament voltage, typical	3.0 V / 6.8 V
Inherent filtration	3 mm Be
Target material	W
Target angle	20°
Radiation coverage	40°
Leakage radiation, max.	5 mSv/h
Cooling medium	Oil
Cooling medium flow, min.	14 l/min
Temperature at inlet, max.	50° C
Weight	40 kg
Terminal type	R24
Mounting flange	10001711
Locking device	940303

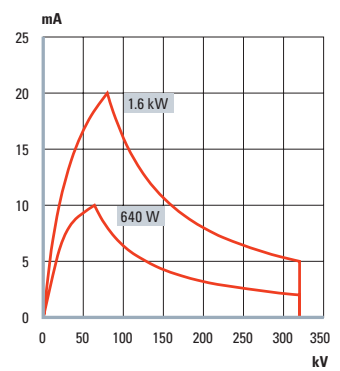
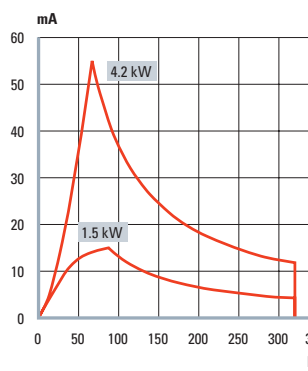
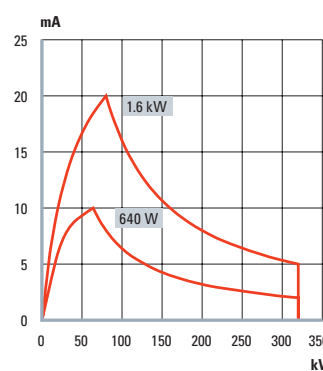
MXR-320/26	
Ordering No.	915358.51
Ordering No. with 90° housing	915358.56
Nominal tube voltage	320 kV
Continuous rating	1500 W / 4200 W
Focal spot acc. EN 12543	d = 3.0 mm / d = 5.5 mm
Filament current, max.	4.9 A / 4.6 A
Filament voltage, typical	2.6 V / 6.4 V
Inherent filtration	3 mm Be
Target material	W
Target angle	20°
Radiation coverage	40°
Leakage radiation, max.	5 mSv/h
Cooling medium	Oil
Cooling medium flow, min.	14 l/min
Temperature at inlet, max.	50° C
Weight	40 kg
Terminal type	R24
Mounting flange	10001711
Locking device	940303

MXR-320/23AX	
Ordering No.	915334.58
Ordering No. with 90° housing	—
Nominal tube voltage	320 kV
Continuous rating	640 W / 1600 W
Focal spot acc. EN 12543	d = 1.9 mm / d = 3.6 mm
Filament current, max.	4.9 A / 4.6 A
Filament voltage, typical	3.0 V / 6.8 V
Inherent filtration	3 mm Be
Target material	W
Target angle	20°
Radiation coverage	40°
Leakage radiation, max.	5 mSv/h
Cooling medium	Oil
Cooling medium flow, min.	14 l/min
Temperature at inlet, max.	50° C
Weight	40 kg
Terminal type	R24
Mounting flange	10001711
Locking device	940303

Outline drawing



Tube diagram





MXR-320/26AX

915358.58
—
320 kV
1500 W / 4200 W
d = 3.0 mm / d = 5.5 mm
4.9 A / 4.6 A
2.6 V / 6.4 V
3 mm Be
W
20°
40°
5 mSv/h
Oil
14 l/min
50° C
40 kg
R24

10001710

940303



MXR-320HP/11

915368.51
—
320 kV
800 W / 1800 W
d = 0.4 mm* / d = 1.0 mm
4.1 A / 4.6 A
2.3 V / 6.8 V
3 mm Be
W
11°
40° x 30°
5 mSv/h
Oil
14 l/min
50° C
40 kg
R24

10001711

940303

*Threshold: 25 %



MXR-320HP/11AX

915368.58
—
320 kV
800 W / 1800 W
d = 0.4 mm* / d = 1.0 mm
4.1 A / 4.6 A
2.3 V / 6.8 V
3 mm Be
W
11°
40° x 30°
5 mSv/h
Oil
14 l/min
50° C
40 kg
R24

10001711

940303

*Threshold: 25 %

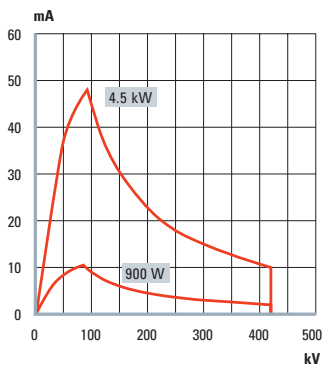
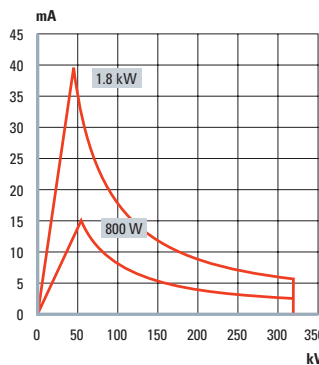
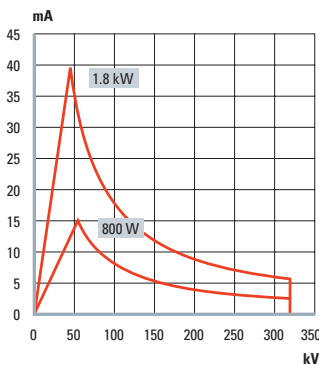
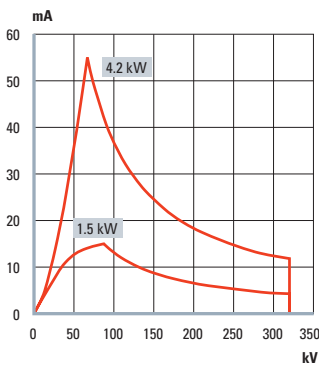
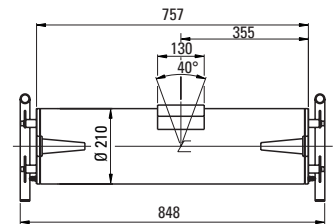
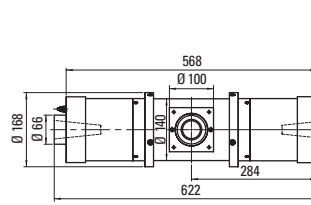
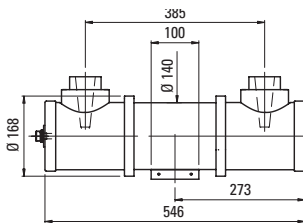
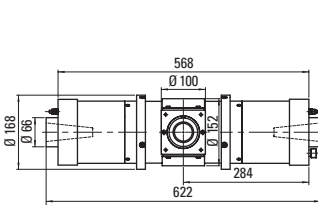


MXR-421/26

915366.55
—
420 kV
900 W / 4500 W
d = 2.5 mm / d = 5.5 mm
4.9 A / 4.6 A
3.0 V / 6.8 V
3 mm + 2 mm Be
W
30°
40°
10 mSv/h
Oil
14 l/min
50° C
95 kg
R28

10001710

—





MXR-451/26

915366.51
—
450 kV
900 W / 4500 W
d = 2.5 mm / d = 5.5 mm
4.9 A / 4.6 A
3.0 V / 6.8 V
3 mm + 2 mm Be
W
30°
40°
10 mSv/h
Oil
14 l/min
50° C
95 kg
R28
10001710
—

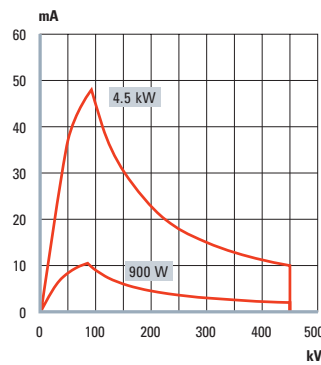
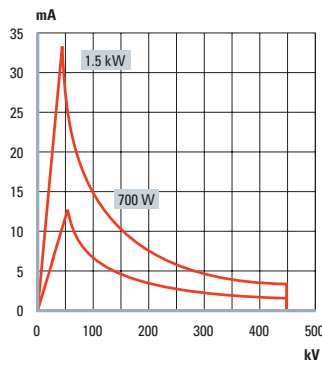
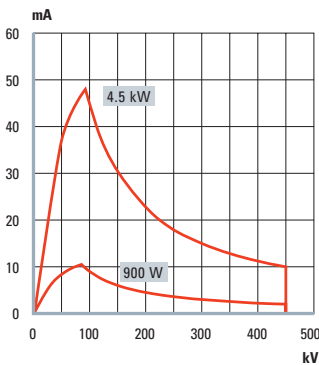
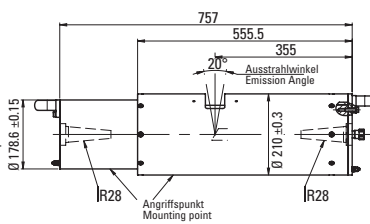
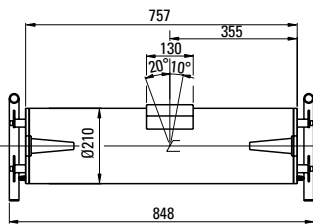
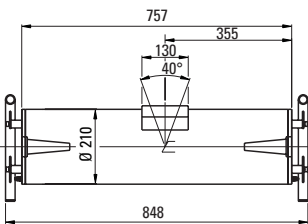
MXR-451HP/11

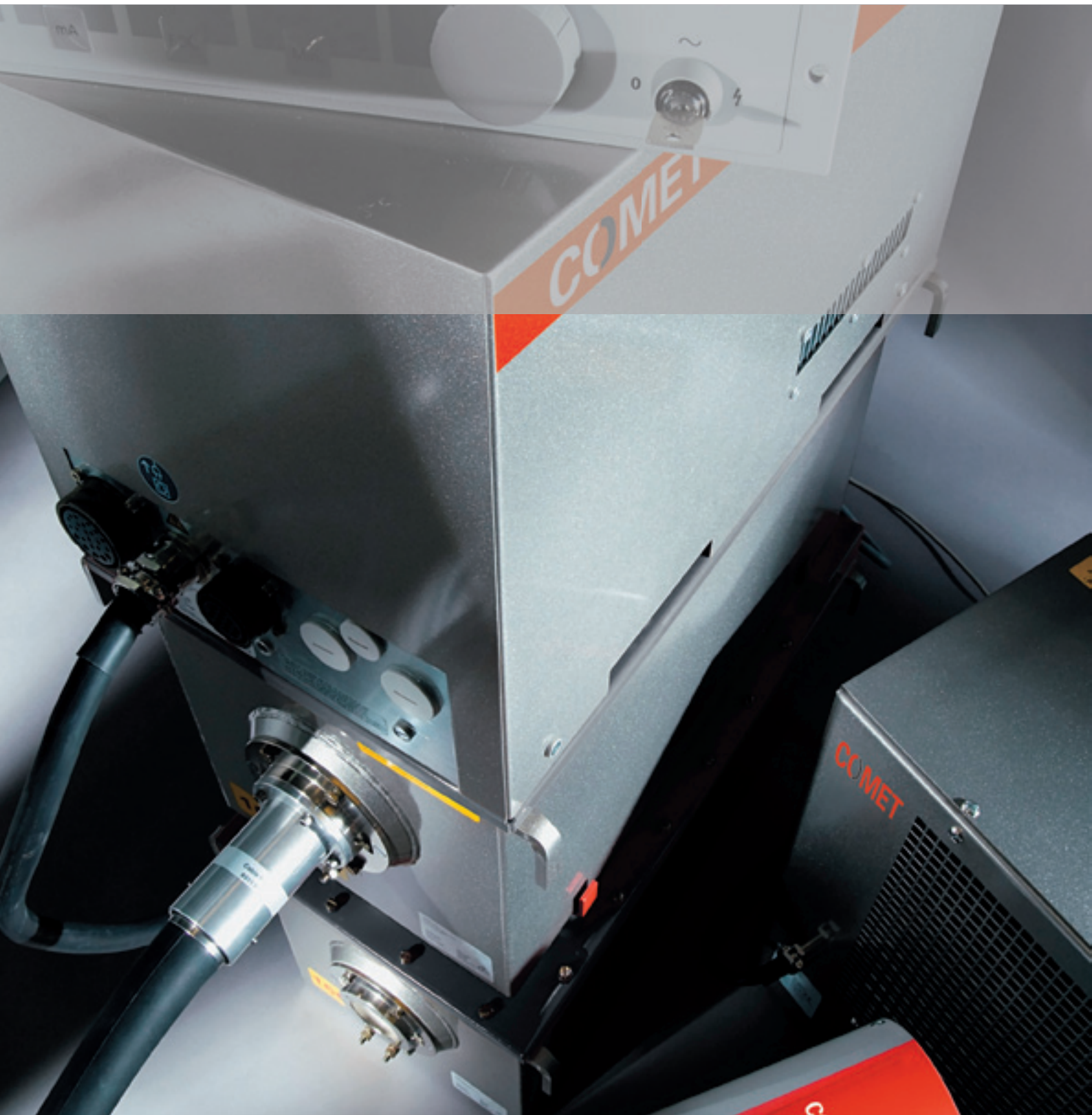
915369.51
—
450 kV
700 W / 1500 W
d = 0.4 mm* / d = 1.0 mm
4.1 A / 4.6 A
2.3 V / 6.8 V
3 mm + 2 mm Be
W
11°
40° x 30°
5 mSv/h
Oil
14 l/min
50° C
95 kg
R28
10001710
—

MXR-452/FB

915344.59
—
450 kV
900 W / 4500 W
d = 2.5 mm / d = 5.5 mm
4.9 A / 4.6 A
3.0 V / 6.8 V
2.3 mm Fe + 1.0 mm Cu
W
30°
90° x 20°
10 mSv/h
Oil
14 l/min
50° C
95 kg
R28
10001710
—

*Threshold: 25 %







12/2010

COMET

Technology with Passion

COMET AG

Industrial X-Ray
Herrengasse 10, CH-3175 Flamatt
T +41 31 744 90 00, F +41 31 744 90 90
xray@comet.ch, www.comet.ch

COMET Technologies USA, Inc.

76 Progress Drive
Stamford, CT 06902, USA
T +1 203 969 2161, F +1 203 969 2162
xray@comet.ch, www.cometusa.com

COMET China

1201 Guiqiao Road,
Building 10, 1st floor
Pudong, Shanghai 201206/P.R. China
T +86 21 6879 9000, F +86 21 6879 9009